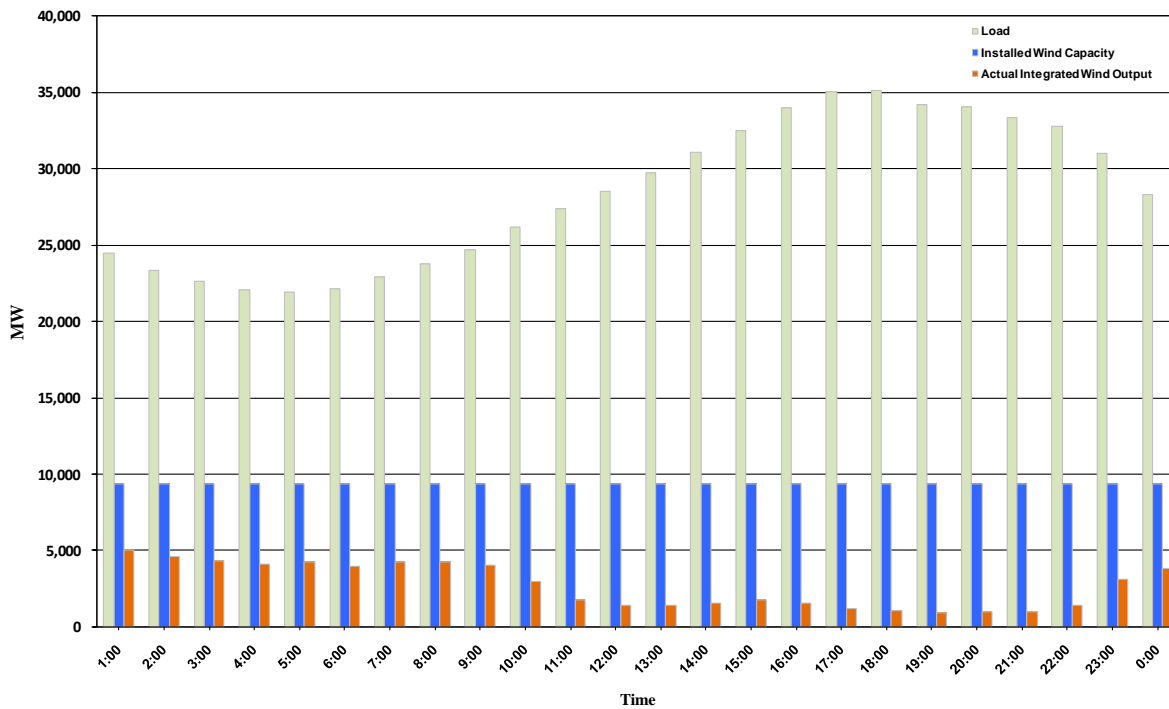




ERCOT Grid Operations Wind Integration Report: 10/31/10

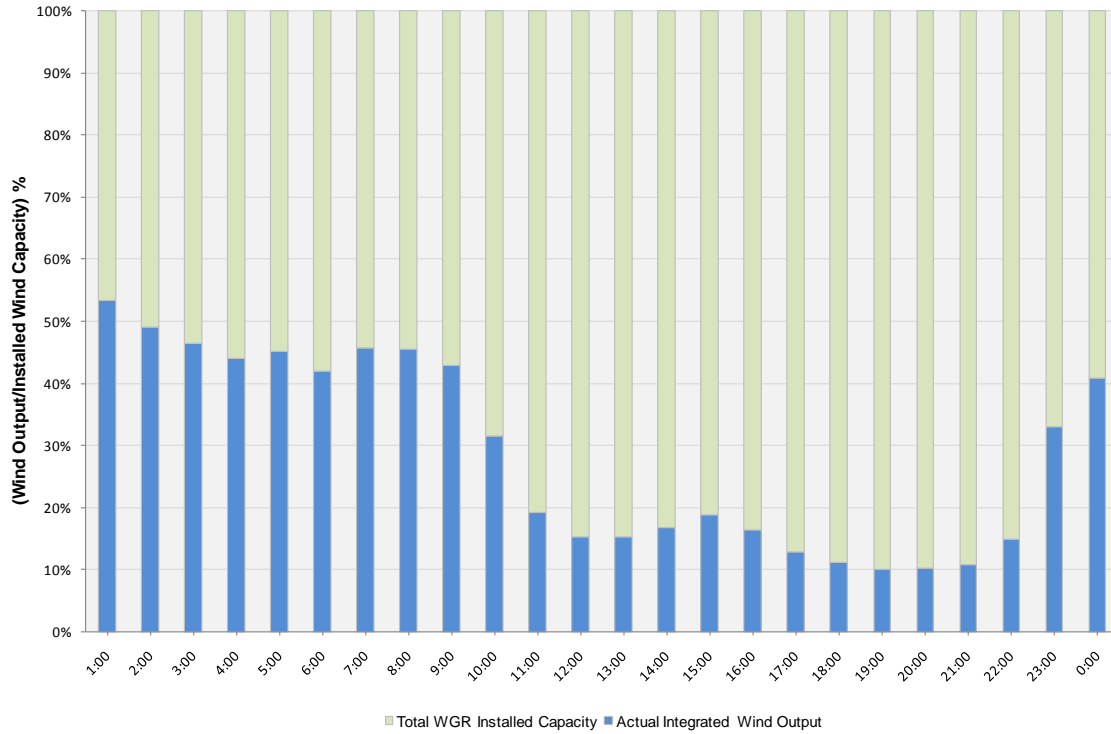
Peak Load	35,084 MW
Load Peak Hour	18
Wind Record 06/12/10	7016 MW
Max Wind value	5162 MW
Wind Peak Hour	00:37:20
Wind Integration %	21.29

Hourly Average Actual Load vs. Actual Wind Output
10-31-2010

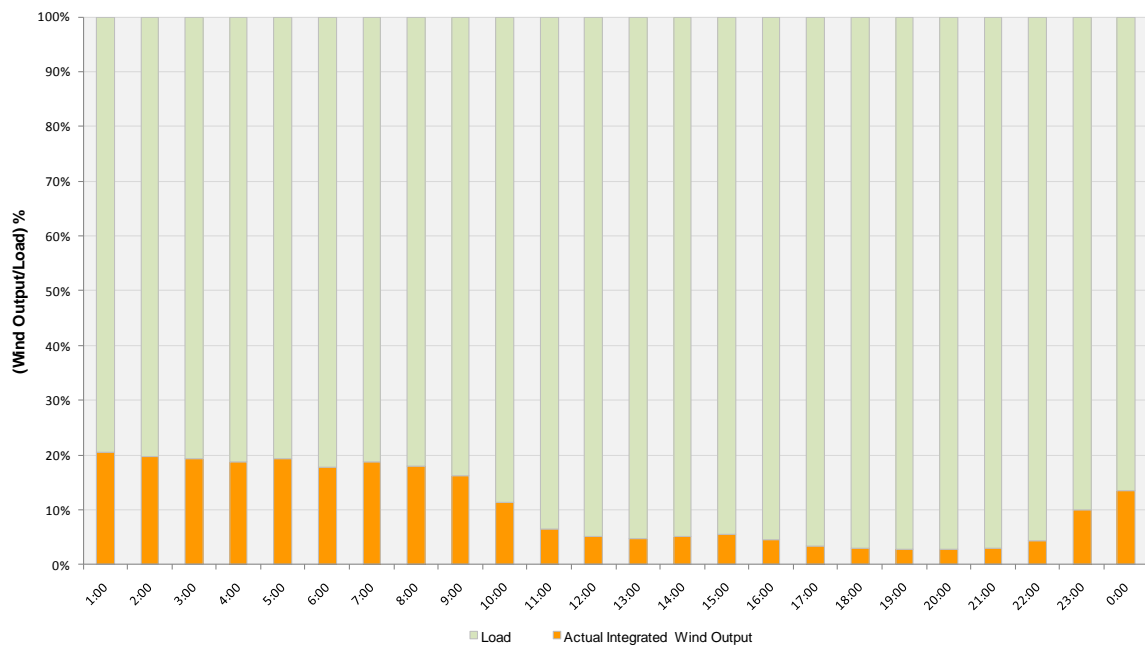




Actual Wind Output as a Percentage of the Total Installed Wind Capacity
10-31-2010



Actual Wind Output as a Percentage of the ERCOT Load
10-31-2010





ERCOT Load vs. Actual Wind Output 10/24/10 - 10/31/10

